

# Role of Technical Service

The 14th Public and Private Joint Forum in Asian Region

Japanese National Traffic Safety and Environment Laboratory  
Automobile Type Approval Test Department

Technical Service Session  
28th Nov. 2023

# Contents

---

1. About NTSEL
2. Technical Service under the 1958 Agreement
  - Designation of Technical Services
  - Requirements of Technical Services
3. Roles of Approval Authority and Technical Service in Japan
4. NTSEL's Approach to the requirements
  - Category A (EN ISO/IEC17025)
  - Management of skills, technical knowledge and experience
5. Follow of the Approval Test
  - Test Selection
  - Conducting Test

# Japanese Technical Service

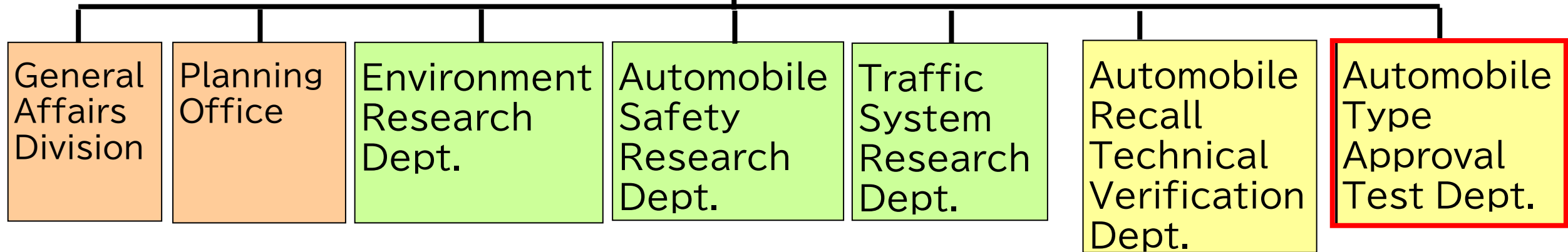
- NTSEL (National Traffic Safety and Environment Laboratory)
  - Organization



- Number of Employees: about 200
- Since 1970

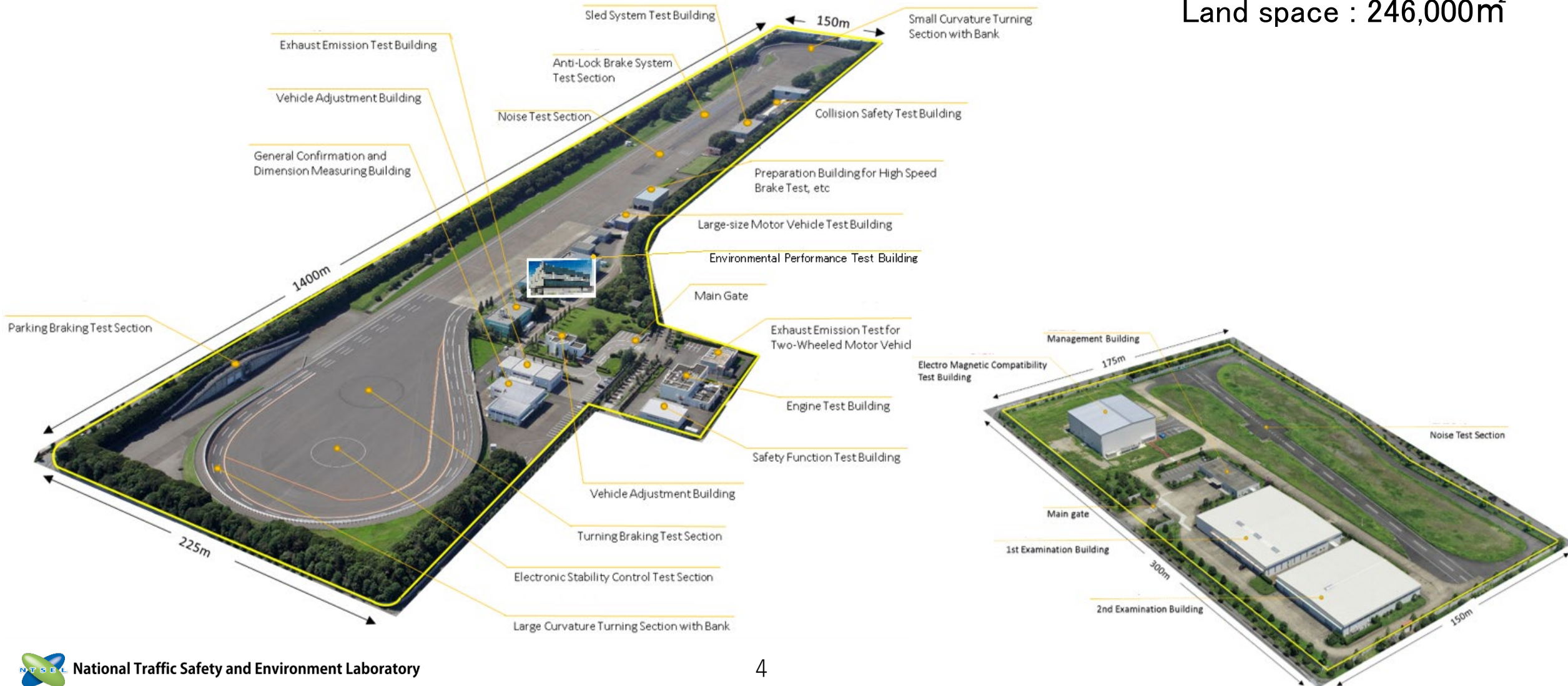
Director General

Executive Director



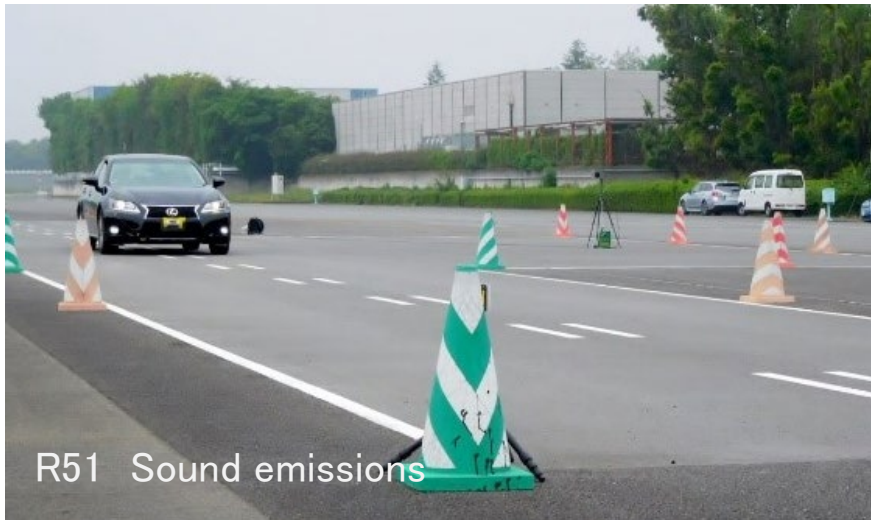
# Layout of NTSEL Proving Ground

Land space : 246,000m<sup>2</sup>



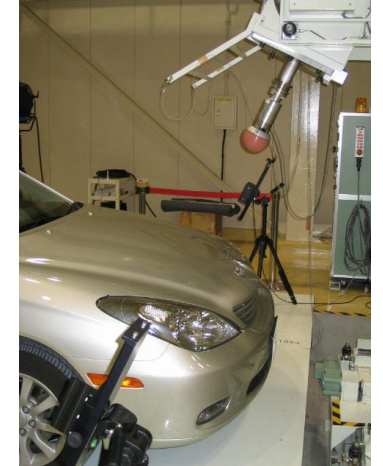
# NTSEL Proving Ground (Exterior Facility)

- Brake & Noise Test Site



# NTSEL Proving Ground (Interior Facility)

- Passive Safety Testing Site

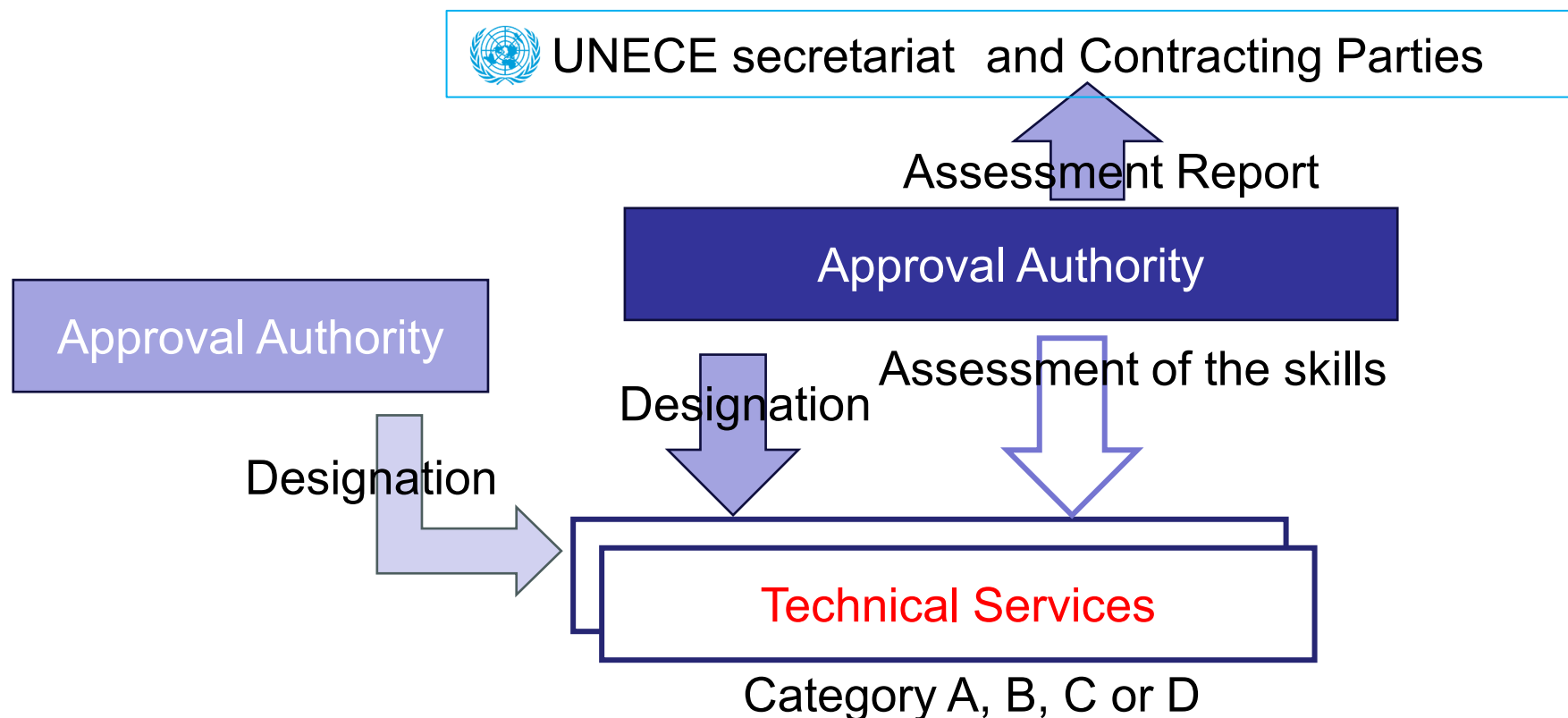


- Fuel economy & Gas Testing Site



# Technical Service under the 1958 Agreement

- Designation of Technical Services



# Requirements of Technical Services

---

- Demonstrate appropriate skills, specific technical knowledge and proven experience
- Comply with the standards listed in Annex 1
  - Category A (tests performed in own facilities)
    - EN ISO/IEC 17025:2005
  - Category B (supervising of tests performed in the manufacturer's facilities or in the facilities of its representative)
    - EN ISO/IEC 17020:2004
  - Category C (procedure for the initial assessment and surveillance audits of the manufacturer's quality management system)
    - EN 45012:1998
  - Category D (inspection or testing of production samples or supervision thereof)
    - EN ISO/IEC 17020:2004



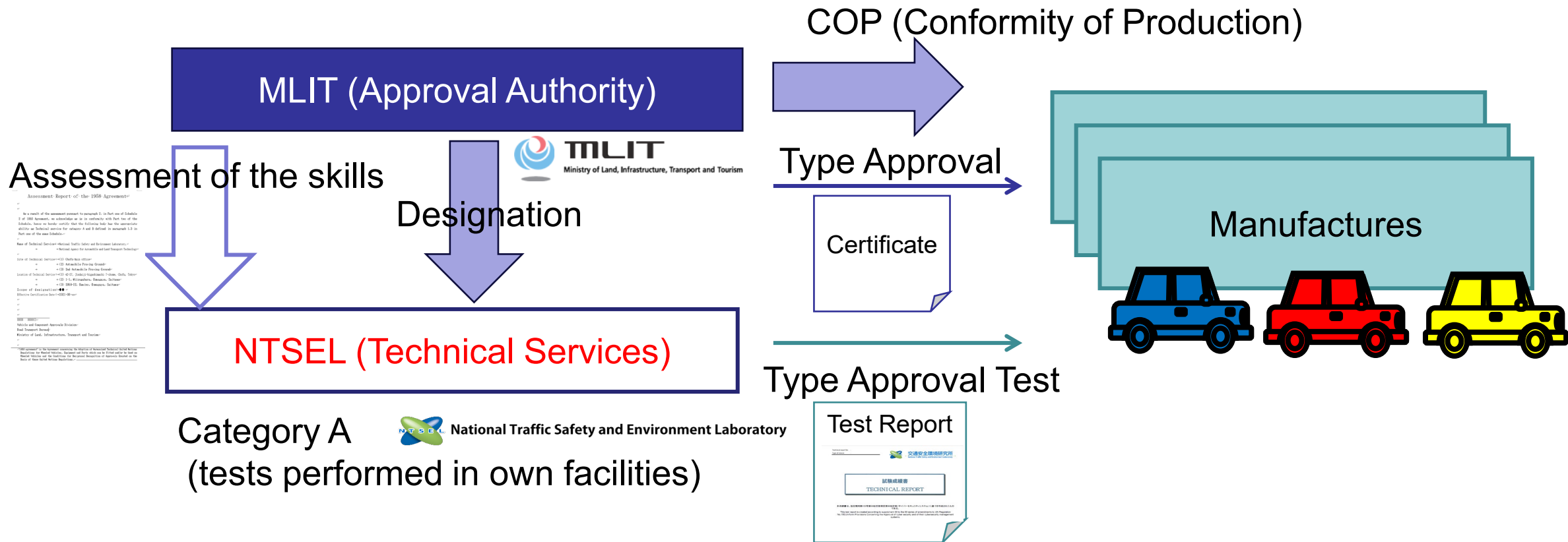
ECE/TRANS/WP.29/1059

RESOLVING INTERPRETATION ISSUES AND REQUIREMENTS FOR THE TECHNICAL SERVICES IN THE FRAMEWORK OF THE 1958 AGREEMENT

D.1. Designation of Technical Services

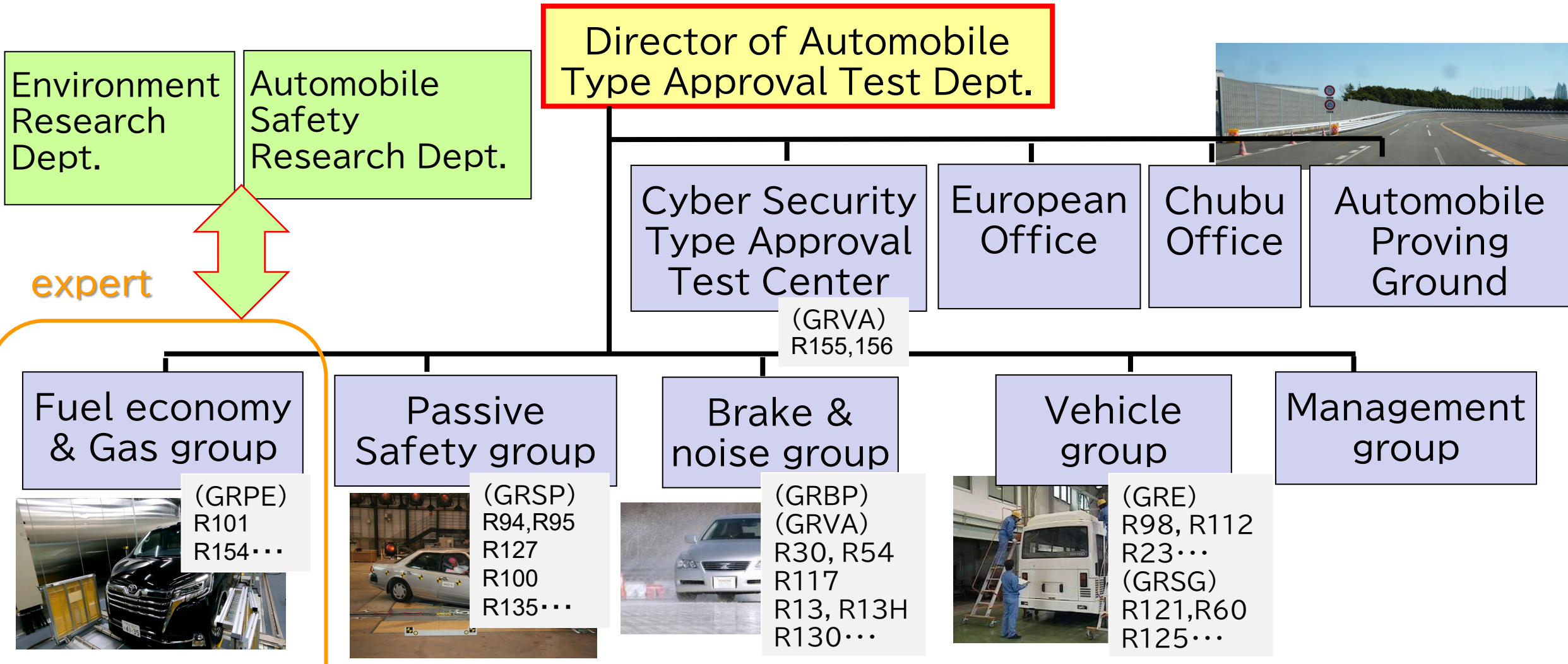


# Roles of Approval Authority and Technical Service in Japan

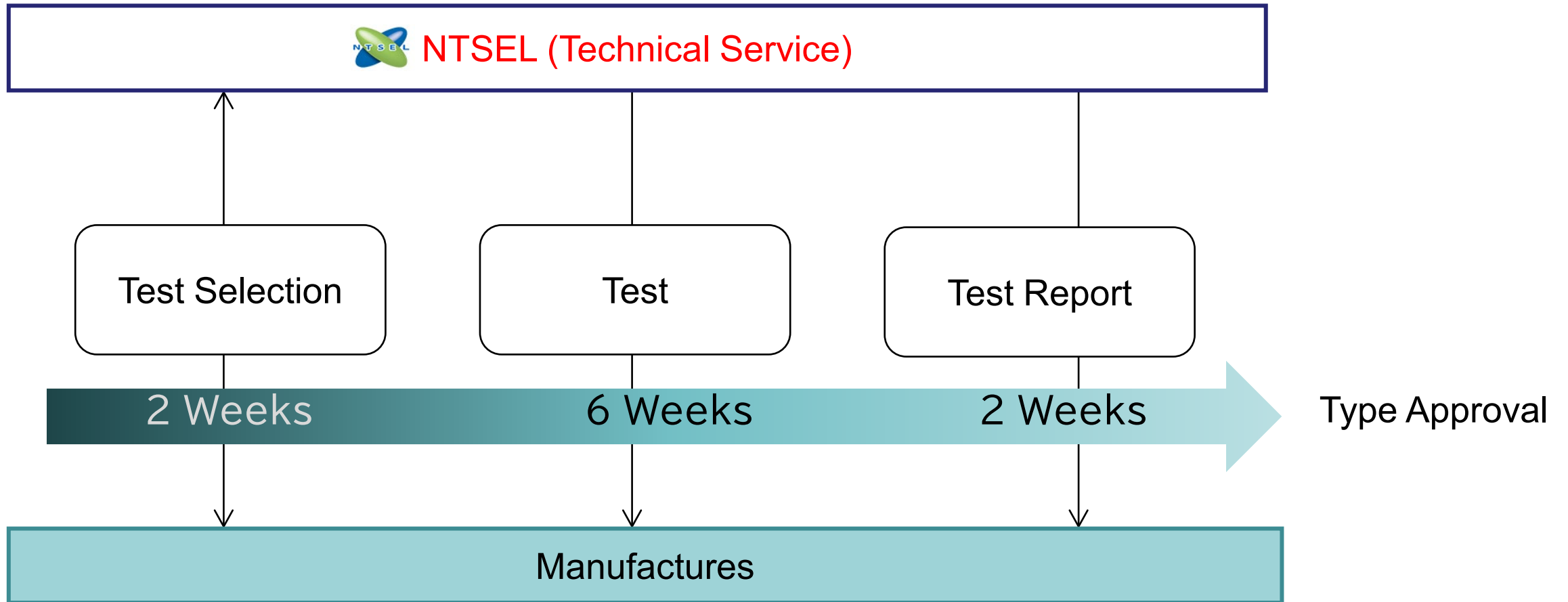




# Activity of NTSEL for assessment ; Organization

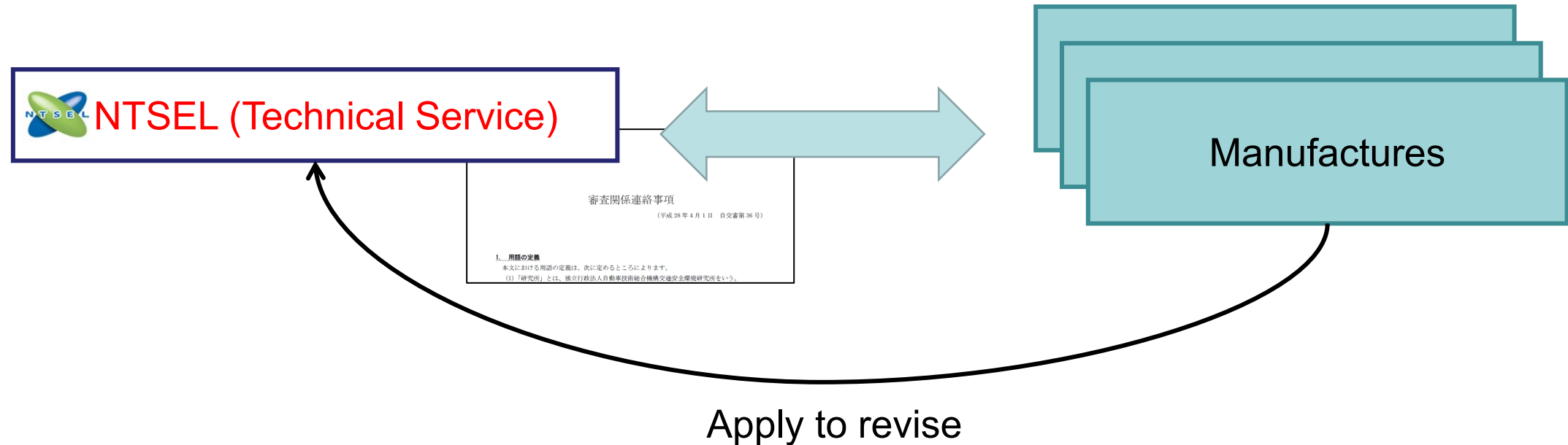


# Flow of Type Approval



# Test Selection: Agreements with Manufactures

- Information to be provided for the type approval test
  - About selection



# Test Selection: Contents of the agreements

## Example of Agreement:

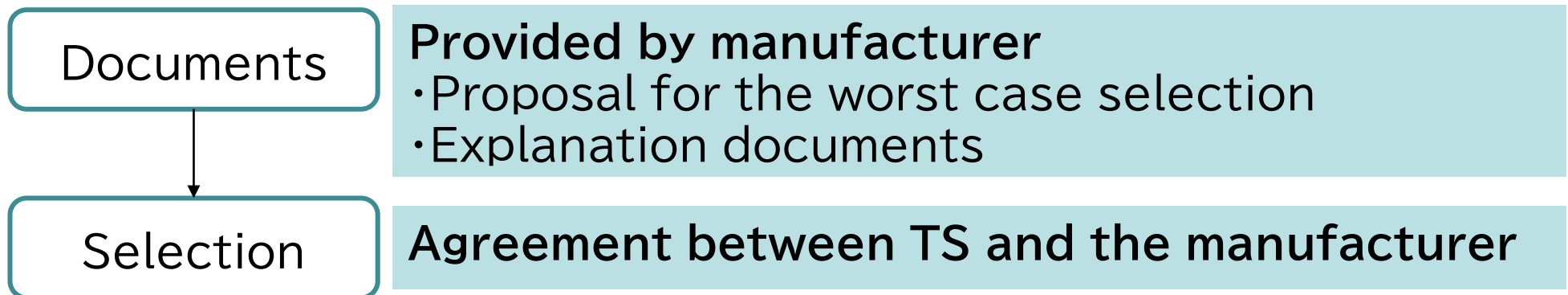
### [A] Family: Condition to select test vehicle

- Vehicle Type
- Equipment Type
- ...

### [B] Worst Case Selection

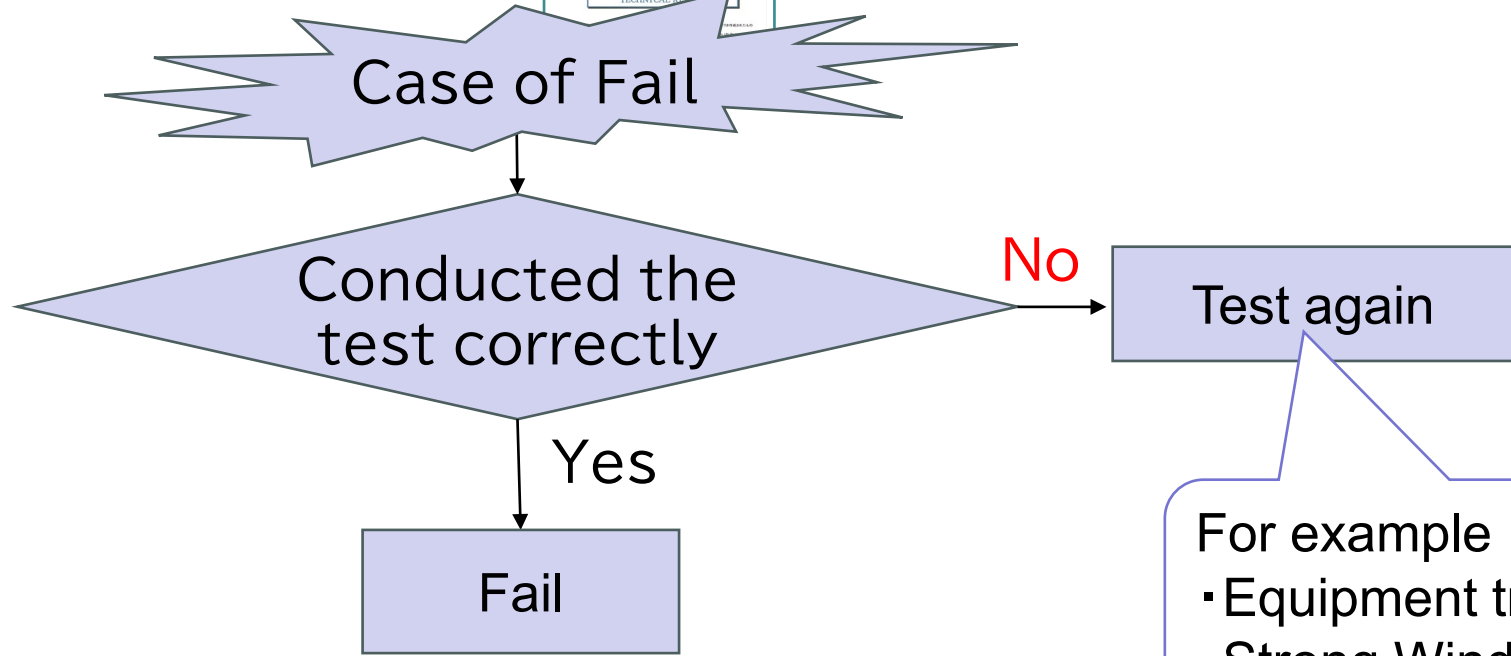
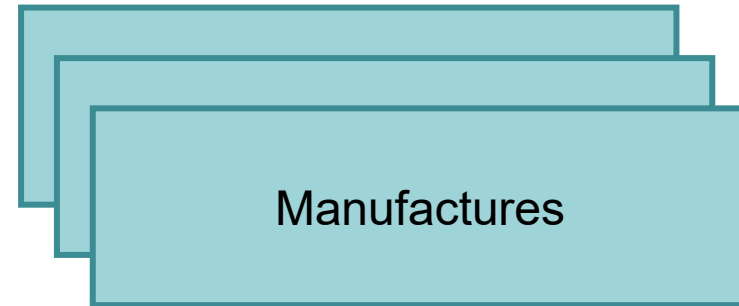
- Specification of Vehicle or Equipment
- ...

12-J012R013H 乗用車の制動装置試験	
12-R013H 乗用車の制動装置試験 (協定規則第13H号)	
<主制動、ABS>	
A項目	・ブレーキ作動方式 (液圧式、空気式、機械式、複合式等の別) ・制動形式 (ディスク、ドラム (LT、2L等の別)) ・制動系統及び制動車輪 ・制動力制御方式 (ABS (車輪速センサー数、チャンネル数等を含む。ただし、主制動及びABS制御に関係しないものは除く。)、プロポーショニング装置、ロード・センシング装置、イナーシャ・プロポーショニング装置等の有無の別) (性能の相違を含む) ・制動倍力装置形式 (真空式、液圧式、空気式、電気式) ・ホイール・シリンダの内径又はブレーキ室膜板径 ・ブレーキの胴径又はディスク有効径 ・ライニング又はパッドの材質 (ウーブン、モールド等の別) 及び寸法 (長さ、幅)
B項目	・最高速度 ・マスタ・シリンダ内径 ・タイヤ動的負荷半径 ・制動倍力装置倍率 ・ブレーキ・ペダル比 ・非積載重量 ・積載重量 ・ライニング又はパッド等の熱特性 ・エネルギー蓄積装置容量 ・プロテクションバルブ作動圧力 ・エネルギー蓄積装置作動圧力 ・圧力調整装置の上限圧力
<駐車制動>	
A項目	・制動系統及び制動車輪 ・制動形式 (ディスク、ドラム (LT、2L等の別)) ・操作方式 (足踏式、ステッキ式、レバー式) ・ブレーキの胴径又はディスク有効径



# Conducting Test

 NTSEL (Technical Service)





For example

- Equipment trouble
- Strong Window

# Conclusion

---

- NTSEL is Japanese Technical Service 
  - Designated by MLIT
  - Category A (tests performed in own facilities)
- Technical Service Under the 1958 Agreement 
  - Designate by Approval Authority
  - Approval Authority Assess TS
- NTSEL's Activity for Requirement
  - Check List
  - Organization
- NTSEL's Flow
  - Agreements with Manufacturer for Test Selection
  - Test Report share with Manufacture